

**AERODROME/
HELIPORT
CHART - ICAO**

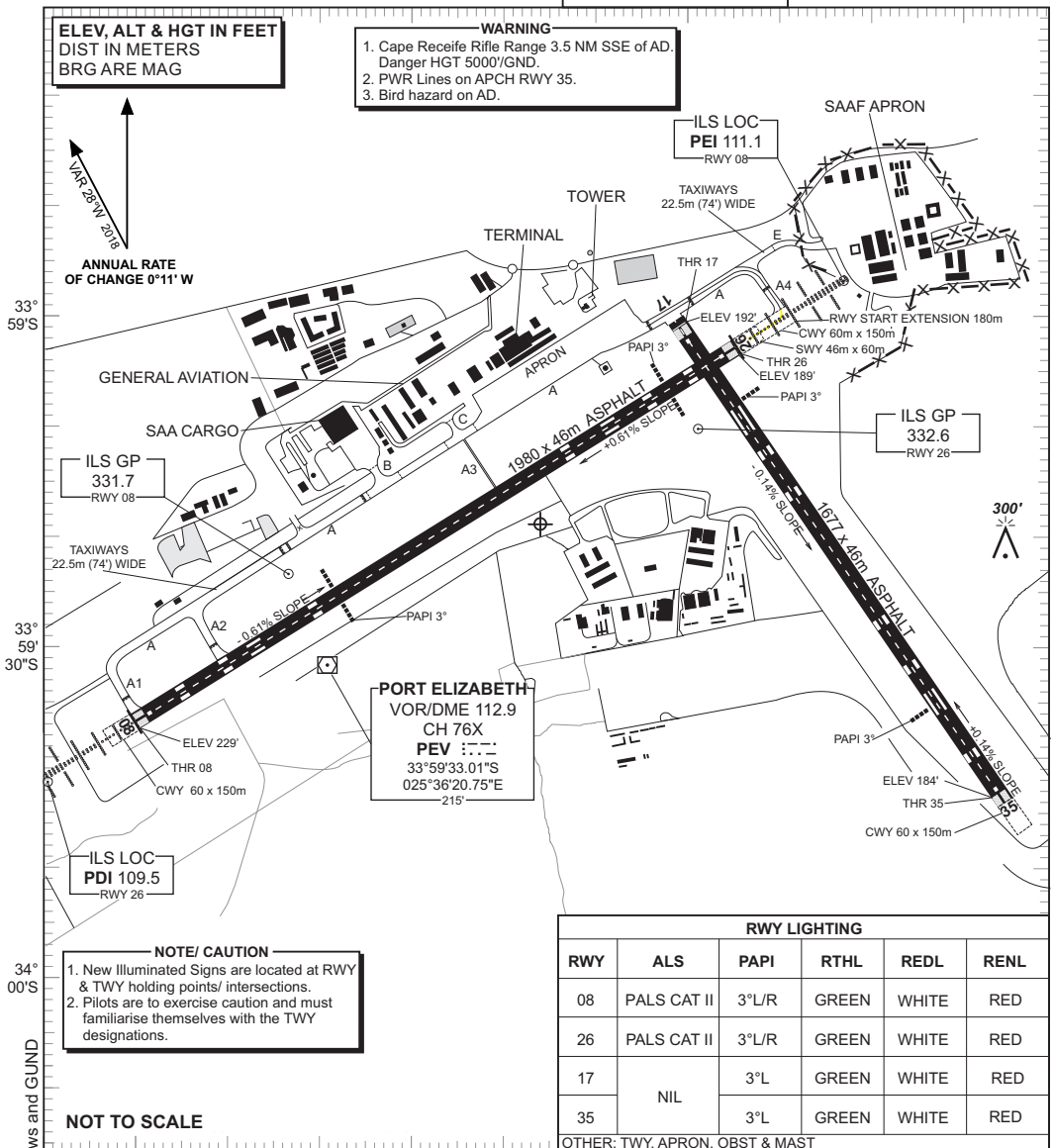
33°59'24.05"S ELEV 229'
025°36'37.00"E
GUND 91.5'

FAPE ATIS 126.80
APN 122.65
TWR 118.10
APP 120.40

**PORT ELIZABETH INTL
FAPE**

**ELEV, ALT & HGT IN FEET
DIST IN METERS
BRG ARE MAG**

WARNING
1. Cape Receife Rifle Range 3.5 NM SSE of AD.
Danger HGT 5000'/GND.
2. PWR Lines on APCH RWY 35.
3. Bird hazard on AD.



PORT ELIZABETH
VOR/DME 112.9
CH 76X
PEV : : : :
33°59'33.01"S
025°36'20.75"E
215'

NOTE/ CAUTION
1. New Illuminated Signs are located at RWY & TWY holding points/ intersections.
2. Pilots are to exercise caution and must familiarise themselves with the TWY designations.

NOT TO SCALE

RWY LIGHTING					
RWY	ALS	PAPI	RTHL	REDL	RENL
08	PALS CAT II	3°L/R	GREEN	WHITE	RED
26	PALS CAT II	3°L/R	GREEN	WHITE	RED
17	NIL	3°L	GREEN	WHITE	RED
35		3°L	GREEN	WHITE	RED

OTHER: TWY, APRON, OBST & MAST

25°36'E 25°36'30"E 25°37'E 25°37'30"E

PHYSICAL CHARACTERISTICS													
RWY	DIRECTION	THR COORDINATES	THR ELEVATION	TORA (m)	TODA (m)	ASDA (m)	LDA (m)	SWY (m)	CWY (m)	SLOPE	SURFACE	BEARING STRENGTH	CIRCUIT
08	058°	33°59'37.89"S 025°36'00.00"E	229'	1980	2040	2040	1980	60	60	0.006 D	ASPH	PCN 50/F/B/X/T	R
26	238°	33°59'03.93"S 025°37'05.57"E	189'	2160	2220	2160	1980	0	60	0.006 U			L
17	146°	33°59'01.81"S 025°36'58.63"E	192'	1677	1737	1677	1677	0	60	0.001 D	ASPH	PCN 50/F/B/X/T	UNK
35	326°	33°59'46.78"S 025°37'35.51"E	184'	1677	1677	1677	1677	0	0	0.001 U			

CHANGE: True/ Magnetic Arrows and GUND

EFF: 08 NOV 18